



CHERRY HILL FIRE DEPARTMENT  
CAMDEN COUNTY, NEW JERSEY

Effective  
01/01/2019 to  
12/31/2019

Residential Resale Requirements for One & Two Family Dwellings  
**CSACMAPFEC 5:70-2.3 (a)**

Requests must be submitted using the online form located at [www.cherryhill-nj.com/fire](http://www.cherryhill-nj.com/fire), 3 to 4 weeks prior to the settlement date. Email questions to [sdi@chfd.org](mailto:sdi@chfd.org) or call **856-429-7441**.

**Inspection Fee/Payment**

Check or money order payable to the "Cherry Hill Fire Department" is **due at the time of inspection**.  
Cash payment **will not** be accepted

|   |                |
|---|----------------|
| Requests received eight (8) calendar days or more prior to the settlement date: | \$100.00       |
| Requests received seven (7) calendar days prior to the settlement date:         | \$115.00       |
| Requests received three (3) calendar days or less prior to the settlement date: | \$162.00       |
| <b>Re-inspection Fee:</b>   | <b>\$35.00</b> |

**Sellers age 62 & over may deduct \$30.00 from the first inspection fee - PROOF OF AGE REQUIRED**

*Certificates are valid for 90 days*

---

---

## Inspection Checklist

### House Numbers

- Numbers are numerical characters, contrasting color from the house, at least 4" high, permanently affixed to the house & visible from the street. *Light post or mailbox numbers are NOT acceptable.*

### Smoke Alarms

- 10-year battery sealed** smoke alarm located on **every level** of dwelling (5:70-4.19) or \*hardwired as required
- Basement level **10-year battery sealed** alarm is located at bottom of stairwell, at ceiling level (not between joists)
- Bedroom hallway **10-year battery sealed** alarms **MUST** be within 10 feet of **ALL** bedroom doors
- Smoke alarm located in **every** bedroom on ceilings
- \*Electric smoke alarms (hardwired) **CANNOT** be replaced with battery operated alarms
- Smoke alarms are less than 10 years old and are operational

Any house equipped with a low voltage fire alarm system (installed by an alarm company) must have that system tested and approved by an alarm contractor prior to the CHFD inspection date. A copy of the alarm certification provided by the alarm contractor must be presented to the CHFD inspector at the time of the inspection.

*\*Electric smoke alarms, required to be installed by the building code, cannot be replaced with battery operated smoke alarms (NJAC 5:70 Section 104.1)*

Do **NOT** install smoke alarms in kitchens, bathrooms, near forced air ducts or furnaces, in the "dead air" space where the ceiling meets the wall, close to ceiling fans, in crawl spaces, or attics.

### Carbon Monoxide Alarms

- Located in the hallway, within 10 feet of **ALL** bedrooms
- Installed as per the manufacturer's instructions
- Carbon monoxide alarm(s) are less than 10 years old and are operational

Do **NOT** place alarms in electrical outlets that can be turned off by a switch or that are located against floor molding. Plug-in, battery powered and hardwired CO alarms are acceptable.

### Fire Extinguisher Installation 5:70-4.19 (e)

- Shall be within **10 feet of the kitchen** and located in the path of egress
- Readily accessible and not obstructed from view
- MOUNTED** on bracket
- Minimum rating **2A-10B:C** under 10 pounds

REVISION JAN 2019

# Diagrams

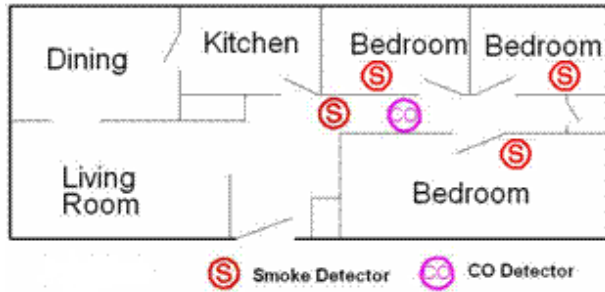


Figure 1

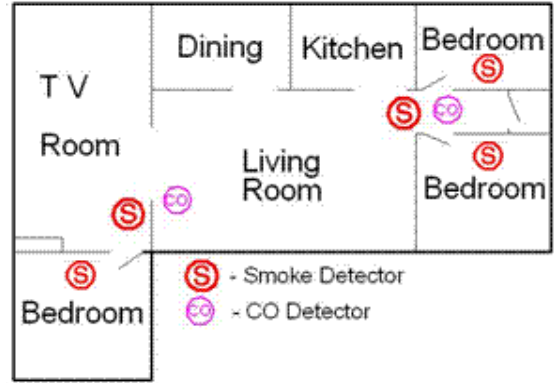


Figure 2

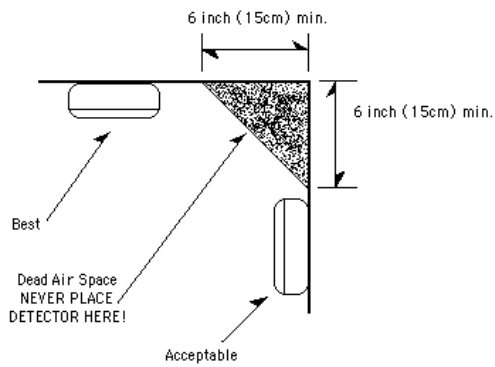


Figure 3

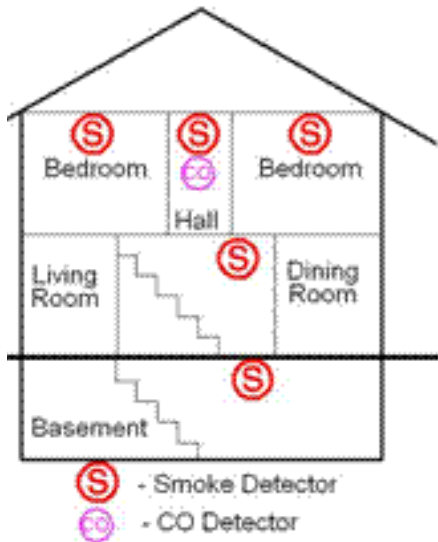


Figure 4

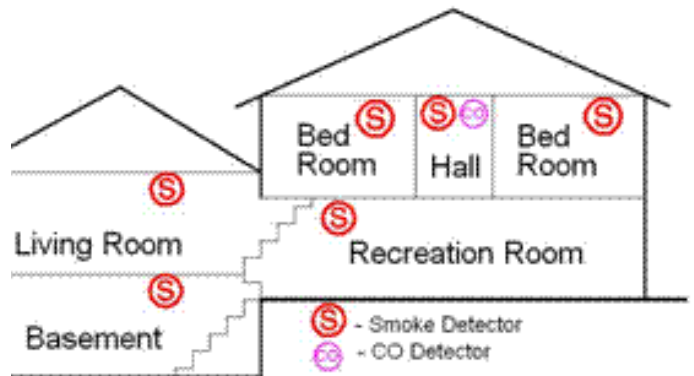


Figure 5