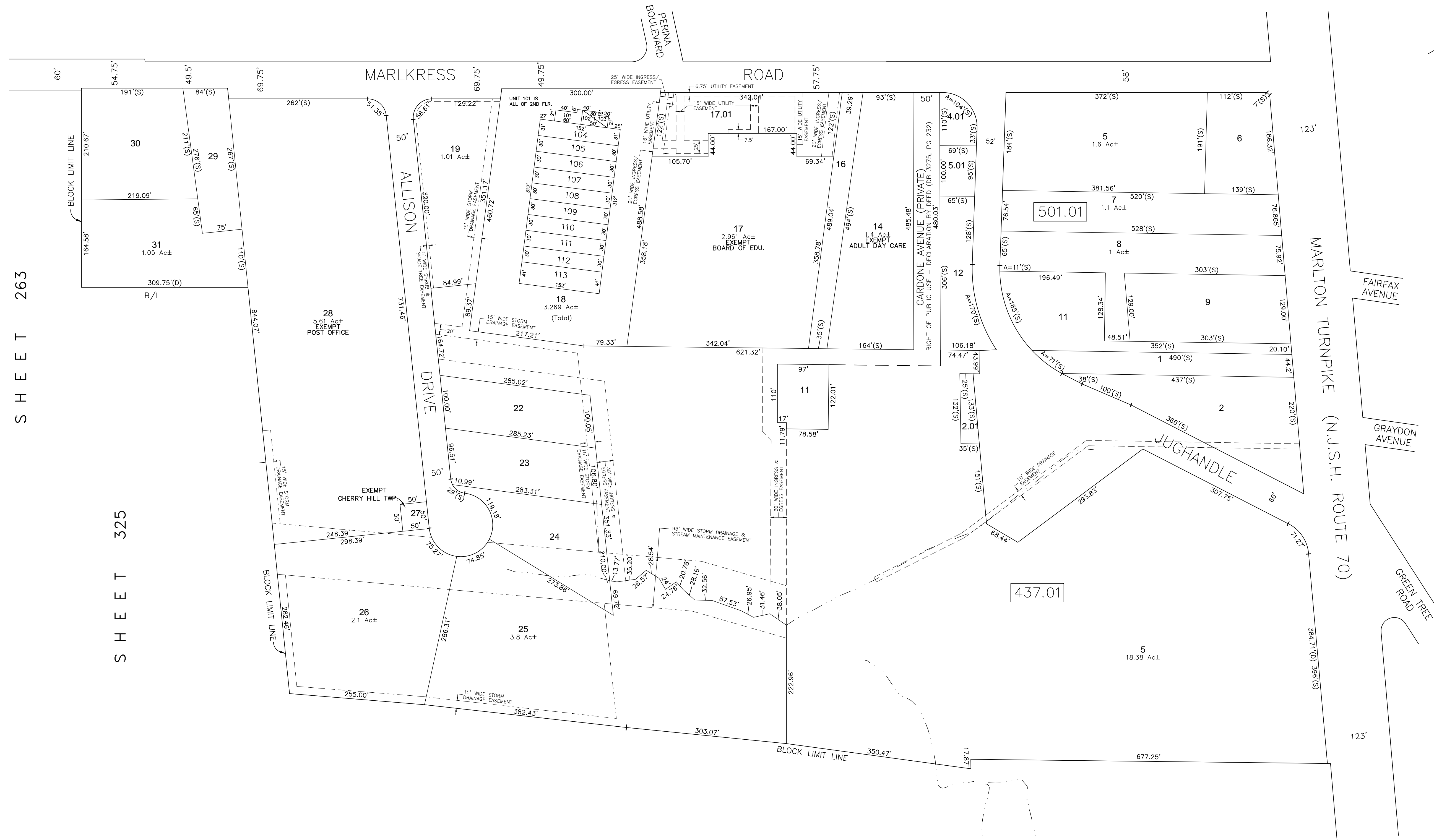
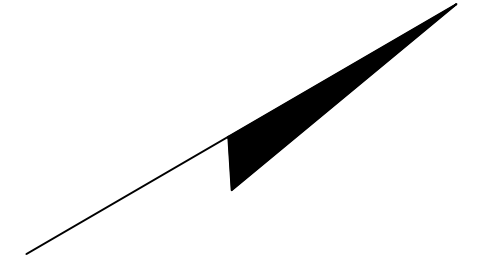


SHEET 262

SHEET 266



SHEET 263

SHEET 325

SHEET 324

SHEET 264

SHEET 268

SHEET 267

TAX MAP
 TOWNSHIP OF CHERRY HILL
 CAMDEN COUNTY, NEW JERSEY
 SCALE: 1"=100' 10/1/02
 William E. Alburger, P.L.S.
 JCA ASSOCIATES, INC.
 1256 NORTH CHURCH STREET, SUITE 3
 MOORESTOWN, NEW JERSEY

THIS MAP HAS BEEN GIVEN
 A FORMAL CERTIFICATION
 DIVISION OF TAXATION ON
 JANUARY 14, 2004 SIGNED
 BY JAMES C. COLL AND SANTO
 DIDONATO AND ASSIGNED
 SERIAL NUMBER 828

THIS SHEET HAS BEEN DRAWN USING COMPUTER AIDED DRAFTING/DESIGN (CAD/D).

TO SHOW CONDITIONS AS OF DECEMBER 2018

REVISIONS				
DATE	BY	LIC.NO	BLOCK	LOT
10/2016	ED CLAY	38342	437.01	3-9,21